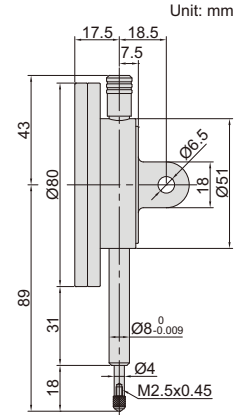


- Large, easy-to-read dial face
- With limit pointers
- Optional accessory: backs , contact points



2888-10



Code	Range	Graduation	Accuracy	Hysteresis	Range/rev	Dial reading	Remark
2888-10*	10mm	0.01mm	17µm	5µm	1mm	0-100	flat back, with spare lug back

* Supplied with manufacturer inspection certificate